

200 0 200 400 600

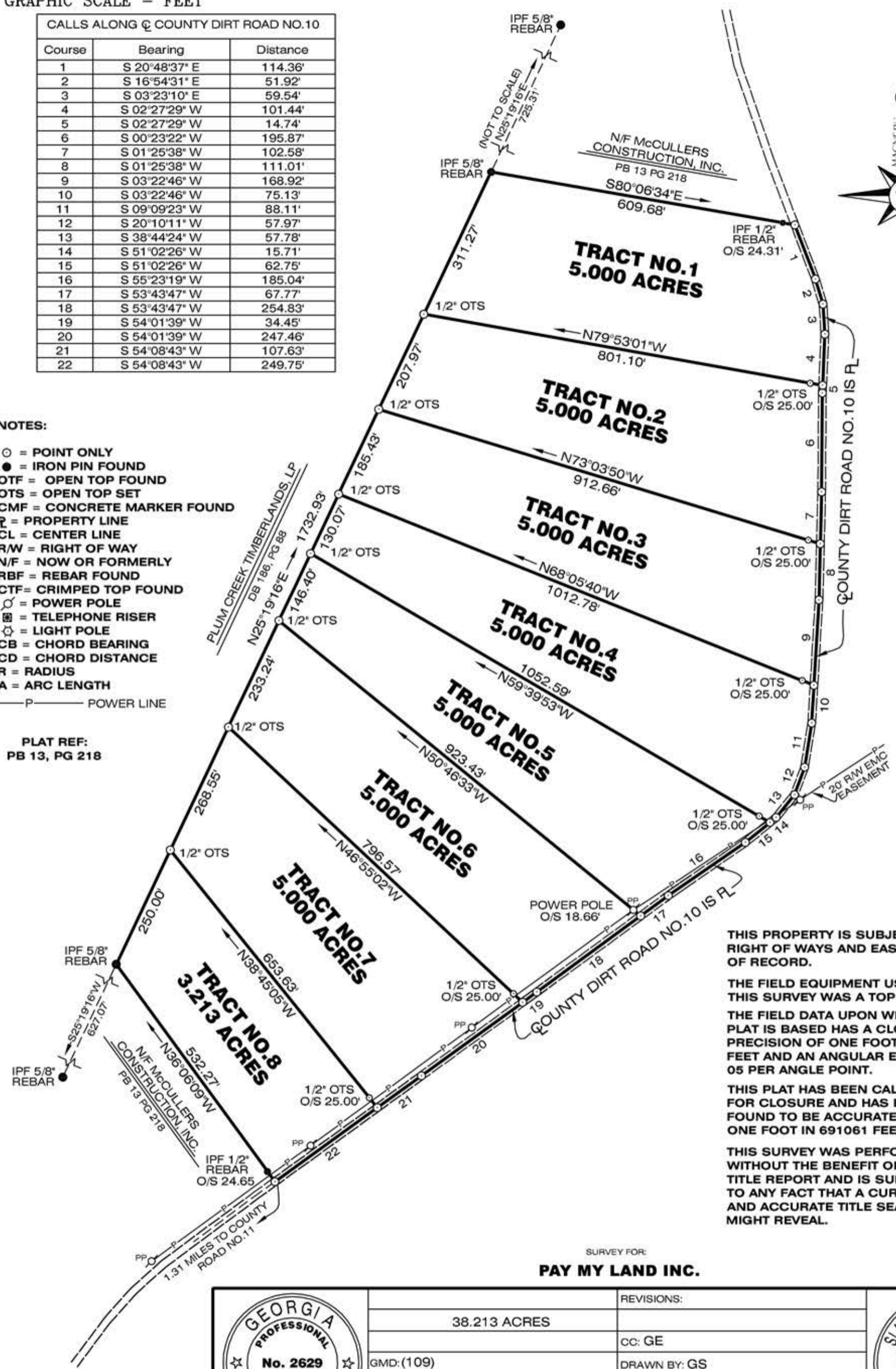
GRAPHIC SCALE - FEET

CALLS ALONG COUNTY DIRT ROAD NO.10		
Course	Bearing	Distance
1	S 20°48'37" E	114.36'
2	S 16°54'31" E	51.92'
3	S 03°23'10" E	59.54'
4	S 02°27'29" W	101.44'
5	S 02°27'29" W	14.74'
6	S 00°23'22" W	195.87'
7	S 01°25'38" W	102.58'
8	S 01°25'38" W	111.01'
9	S 03°22'46" W	168.92'
10	S 03°22'46" W	75.13'
11	S 09°09'23" W	88.11'
12	S 20°10'11" W	57.97'
13	S 38°44'24" W	57.78'
14	S 51°02'26" W	15.71'
15	S 51°02'26" W	62.75'
16	S 55°23'19" W	185.04'
17	S 53°43'47" W	67.77'
18	S 53°43'47" W	254.83'
19	S 54°01'39" W	34.45'
20	S 54°01'39" W	247.46'
21	S 54°08'43" W	107.63'
22	S 54°08'43" W	249.75'

NOTES:

- = POINT ONLY
- = IRON PIN FOUND
- OTF = OPEN TOP FOUND
- OTS = OPEN TOP SET
- CMF = CONCRETE MARKER FOUND
- PL = PROPERTY LINE
- CL = CENTER LINE
- R/W = RIGHT OF WAY
- N/F = NOW OR FORMERLY
- RBF = REBAR FOUND
- CTF = CRIMPED TOP FOUND
- ⊙ = POWER POLE
- ⊕ = TELEPHONE RISER
- ⊙ = LIGHT POLE
- CB = CHORD BEARING
- CD = CHORD DISTANCE
- R = RADIUS
- A = ARC LENGTH
- P ——— POWER LINE

PLAT REF:
PB 13, PG 218



THIS PROPERTY IS SUBJECT TO ALL RIGHT OF WAYS AND EASEMENTS OF RECORD.

THE FIELD EQUIPMENT USED ON THIS SURVEY WAS A TOP GTS 313. THE FIELD DATA UPON WHICH THIS PLAT IS BASED HAS A CLOSURE PRECISION OF ONE FOOT IN 52876 FEET AND AN ANGULAR ERROR OF 05 PER ANGLE POINT.

THIS PLAT HAS BEEN CALCULATED FOR CLOSURE AND HAS BEEN FOUND TO BE ACCURATE WITHIN ONE FOOT IN 691061 FEET.

THIS SURVEY WAS PERFORMED WITHOUT THE BENEFIT OF A TITLE REPORT AND IS SUBJECT TO ANY FACT THAT A CURRENT AND ACCURATE TITLE SEARCH MIGHT REVEAL.

SURVEY FOR:
PAY MY LAND INC.

SURVEYED BY:
SLATE AND ASSOCIATES, INC.
G. BRIAN SLATE, RLS#2629
12610 AUGUSTA ROAD
LAVONIA, GEORGIA 30553
706-356-8800



38.213 ACRES	REVISIONS:
GMD: (109)	CC: GE
COUNTY: HANCOCK, GEORGIA	DRAWN BY: GS
SURVEYED: FEBRUARY 16, 2029	CHECKED BY: BS
SCALE: 1" = 200'	JOB #: 4474
	FILE #:



IN MY OPINION, THIS IS A CORRECT REPRESENTATION OF THE LAND PLATTED AND HAS BEEN PREPARED IN CONFORMITY WITH THE MINIMUM STANDARDS AND REQUIREMENTS OF LAW.

GEORGIA PROFESSIONAL LAND SURVEYOR, RLS#2629

Created with deskPDF PDF Writer - Trial :: http://www.docudesk.com